

# University of Tampa

## International Exchange Student Handbook



# TABLE OF CONTENTS



02	<b>Table of contents</b>
03	<b>Welcome</b>
04	<b>Tampa Bay Area</b>
	<b>Living in the States</b>
06	• US Currency
07	• Visa and Immigration
08	• Immigration and Checking In
09	• Social Security Number
10	• Driver's License
	<b>Living in Tampa Bay</b>
11	• Housing
18	• Cellphones
19	• Banking
20	• Grocery
21	• Transportation
26	• Recreation and Entertainment
	<b>Living at University of Tampa</b>
29	• Advising
36	• Tuition, Fees, Email Account, ID
37	• Wireless Access
38	• Bookstore & Recreation Center
39	• Food Services
44	• Social Media
45	• Emergency Numbers
46	• Campus Safety
48	• Campus Map

# WELCOME



**Dear International Exchange Students,**

**It is my great pleasure to welcome you to the University of Tampa! UT is a private, residential university located on 110 acres on the riverfront in downtown Tampa that offers more than 200 academic programs taught by distinguished faculty.**

**Embarking on an exchange semester or year abroad can be daunting, but it is sure to be one of the best adventures of your life! In order to help you prepare for the experience, one of our international student alumnae, Zeel Panchal, created this handbook to make your journey easy and enjoyable. This handbook curates information on visas, immigration, academics, life at UT, and life in the Tampa Bay region.**

**I look forward to meeting each of you in person at the start of your exchange semester and supporting you throughout the experience!**

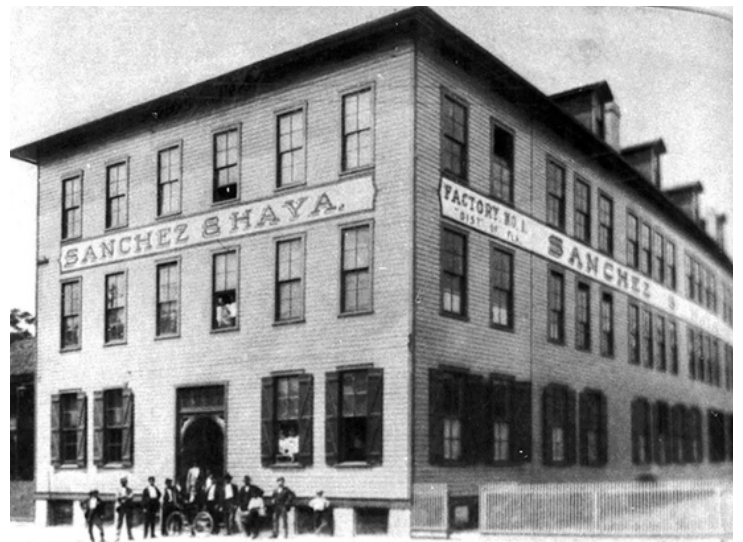
**Autumn Brucato, M.S.  
Assistant Director, Education Abroad  
International Programs Office**



# TAMPA BAY AREA



The City of Tampa is a beautiful city that lies at the shore of west-central Florida or the northeastern end of Tampa Bay. It is the 3rd largest city in Florida and 51st largest city in the United States with a population touching 400K as of 2020. The town was incorporated back in 1855. Soon it gained popularity as the Cigar city. The town's first cigar factory was established in 1886 and evolved as a prominent cigar-making center. Nowadays, it is a major distribution center and hosts a wide range of industries like aviation, defense electronics, and marine sciences to name a few. It now has a wide range of industries and is a major distribution center.



Tampa has a subtropical climate with hot, humid summers, frequent thunderstorms, and sunny winters. Average daytime temperatures in summer (May to October) are 76-90 F (24-33 C) and go down to 45 F (7 C) in winter (November to February). In winter it is pleasant with the sun shining but sometimes it does get windy.

**Always carry an umbrella no matter what season.**

**Hurricane  
Guide**



This is a city for all ages to enjoy as it captures the beautiful outdoors, arts and culture, and exciting attractions. With the major tourist attractions like Busch Gardens, beautiful beaches, and museums, it is also a great winter fishing destination. It is prominent as a regional cultural center.

The Tampa Bay Area is surrounded by the most beautiful white sand beaches, has splendid weather conditions, low taxes, no income tax, a resilient employment and job market, abundant wine & dine restaurants, and of course quality healthcare.

Florida is a multilingual state. Most of the people in Tampa speak English or Spanish. Tampa residents speak mostly English, while 27.91% speak other languages. The non-English language spoken by the largest group is Spanish, which is spoken by 20.49% of the population.

Further, Tampa hosts an annual festival early in the year to highlight the pirate invasion of the city - The Gasparilla Pirate. Its theme is based on legendary pirate Jose Gaspar, who is said to have terrorized western Florida in the late 18th and early 19th centuries.



# LIVING IN THE STATES

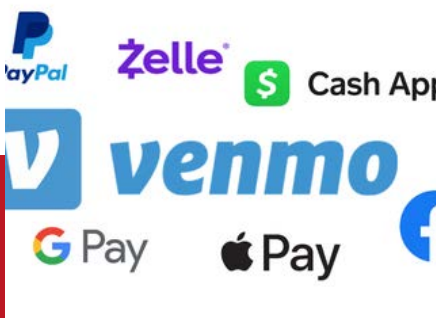
## Currency



American coins come in three colors and seven sizes. Unfortunately, smaller sized coins are not always lower in value than larger coins.

- The penny or cent, worth 1 cent, is the only copper colored coin.
- The nickel, worth 5 cents, is silver colored and is larger than a penny.
- The dime, worth 10 cents, is silver colored and is the smallest coin.
- The quarter, worth 25 cents, is silver colored and is larger than the nickel.
- The half-dollar, or 50-cent piece, is silver in color and larger than a quarter, but is not in common use.
- The one dollar or golden dollar is the only coin that is gold in color, but is not in common use.
- All U.S. paper money is the same size and the same color other than the new \$20 and \$10 bill, which has added colors. Denominations include \$1, \$5, \$10, \$20, \$50, \$100 and larger amounts. Paper money for amounts over \$100 is generally not seen in public circulation.

Apart from traditional money, people are more used to using digital wallets as an equivalent to physical wallet. Digital wallets store funds and payment information the same way a wallet holds cash, cards, or cheques. If the names PayPal, Apple Pay, Google Wallet, Samsung Pay, Venmo, Cash App (to name a few) sound familiar, then you're likely to have used a digital wallet by now.



# VISA AND IMMIGRATION

## Visa and Passports

As an international exchange visitor, you will be granted a J-1 visa which is managed by the U.S. Department of State. The J-1 visa has several conditions such as maintaining a full course of study and strict limitations on employment. Working on campus is usually the only employment option available to exchange students. Since jobs are limited on campus, do not plan on employment as a source of income during your stay in the United States, especially during first year.

NOTE: Your passport should be valid at least six months beyond the date of entering the U.S. as a student. Be sure to check your passport expiration date. If it will expire close to when you will begin classes, obtain a new passport before applying for your visa.

## How to obtain a visa?

Although U.S. embassies will not issue a student visa prior to 120 days before the start date on the DS-2019, you can schedule an appointment prior to the 120-day period. Since processing times have become longer due to increased security clearances Students should check with their local U.S. embassy or consulate to learn the estimated waiting time and allow plenty of time to obtain the visa. A list of consulates and embassies can be found at [usembassy.gov](http://usembassy.gov).

NOTE: You will need to pay the SEVIS fee at least three business days before your visa interview. The fee can be paid online or by mail.



“**First-time students with an initial DS-2019 may not enter the U.S. more than 30 days prior to the start date on their DS-2019.**”

“**Your documents are extremely important. They legitimize your presence in the United States. Keep them in a safe and secure place.**”

# IMMIGRATION AND CHECK-IN

All new J-1 International Exchange students must complete the immigration check-in process virtually. Instructions for completing the check-in are located on the International Exchange Student Program webpage and emailed directly to all exchange students.

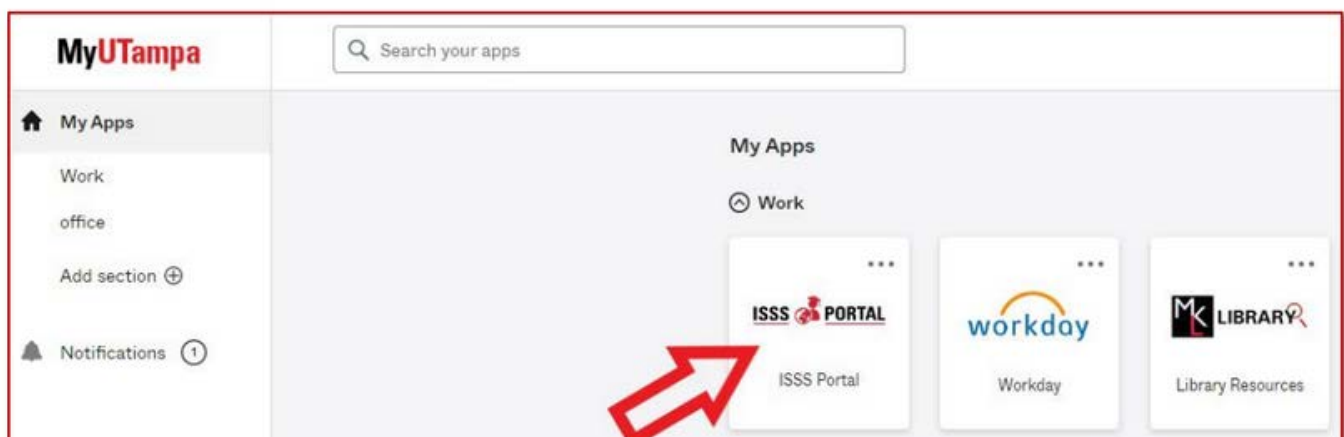
## Exchange Student Immigration Check-In Instructions

Complete the New International Exchange Student Check-in through your **MyUTampa > ISSS Portal** account. You will have access to begin the immigration check-in on the ISSS portal starting 30 days prior to the program start date on your DS-2019, but you will not be able to submit it until after you have been issued the DS-2019 and you have arrived in the U.S.

All J-1 students must check-in within 10 days of arriving in the USA (if arriving from abroad) and no later than 15 days after the first day of the semester. After you complete check-in, and after the first week of classes, your international student advisor will register your SEVIS record as active. **Students who have an on-campus job offer or need to get a driver's license will be prioritized.**

### New International Student Online Check-In Instructions

1. Go to MyUTampa and Look for ISSS Portal.





# MAINTAINING YOUR MIGRATORY STATUS

International Student Immigration Status is not hard to maintain, but be mindful that everything that may be easy for an American student can be really hard or complicated for international students, and doing something wrong or making any major decision can affect your status, or result in a termination. It's important to consult your International Student Advisor if you have any issue with your classes, your health, your housing, or even with your family or friends. They can always help to find the best solution for you.

## Tips to help you maintain your status

- Read page 2 of your DS-2019. All your legal responsibilities are described there. If there is something you don't understand, ask your International Student Advisor.
- Your International Student Advisor and your Academic Advisor are two different people, and they can help you in different ways.
  - Attend classes and be enrolled full time during the duration of your program. Absences and dropping classes without authorization of IPO can result in termination.
  - Be mindful of the program end date on your DS-2019, once it is expired it cannot be extended.
  - Read and study the Code of Conduct of UT. In case of infractions, the Office of Conduct can suspend a student and in the case of international students it would mean termination.
  - Keep your immigration documents (passport, visa, DS-2019s, etc.) in a safe place and keep them valid at all times.
  - Do not accept or start working without the authorization of IPO.
  - Never use any other visa to reenter the country, only your student visa.
  - Check your spartan email everyday, even on breaks and holidays. Some important communications are time sensitive and they are always sent to your spartan email.

# SOCIAL SECURITY NUMBER (SSN)

The Social Security Administration (SSA) will only issue Social Security numbers to J-1 exchange visitors in the following cases:

- Have an on-campus job or have a firm promise of a job on-campus that will begin in the near future.
- Students authorized for Academic Training (AT)

If the applicant does not satisfy one of these criteria SSN will not be issued. SSA does not accept applications more than 30 days in advance of the employment start date.

## How to apply for a Social Security Number?

1. Go to <https://www.ssa.gov/number-card> to request a SSN
2. Fill out the form and select only *valid passport, DS-2019, and I-94* as documents. You must bring original copies of these when you visit the Social Security Administration office.
3. After completing the online form, the website will generate a document that includes a unique ID.
4. Visit any Social Security Administration office and bring the required documents:
  - Document proving you submitted the online form, which includes the unique ID
  - Valid Passport
  - Electronic I-94 print out ([www.cbp.gov/i94](http://www.cbp.gov/i94))
  - DS-2019
  - Evidence of employment status (Letter from HR and IPO if for on-campus employment or Offer letter for Academic Training.)

## Social Security Number Office Location

Address: 4010 Gunn Highway, Suite 100, Tampa, FL 33618

Hours: Monday to Friday, 9 a.m. - 4 p.m.



S Howard St &  
W Horation St

Armenia Ave  
& Busch Blvd

Gunn Hwy &  
Premier North Dr

# DRIVER'S LICENSE

With proper documents, you may obtain a Florida driver's license if you have a driver's license from your home country. Because your DS-2019 must be registered to active status at the time of application, you must complete your document check and immigration information session before you can apply for a Florida driver's license.

The screenshot shows the FLHSMV website header with the logo, an A-Z Guide, a search bar, and the name of the Executive Director, Terry L. Rhodes. Below the header is a navigation menu with links for ABOUT, NEWS, SAFETY CENTER, INSURANCE, RESOURCES, LOCATIONS, CAREERS, and CONTACT. A secondary menu highlights DRIVER LICENSES & ID CARDS, MOTOR VEHICLES, TAGS & TITLES, and FLORIDA HIGHWAY PATROL. The main content area is titled DRIVER LICENSES & ID CARDS and features a red bar with links: Renew or Replace Your License, What to Bring, Florida's NEW Driver License and ID Card, Fees, and Emergency Contact Information. A 'Need Help?' button with a question mark icon is also present.



Florida Highway Safety and Motor Vehicles (FLHSMV)



Documents to Bring



Frequently Asked Questions

# On-Campus Residence Halls



## THE VAUGHN CENTER

The Vaughn Center, a nine-story multi-purpose facility, houses approximately 550 students in double and triple-occupancy rooms. The first, second and ninth floors features dining venues, a computer lab, the campus store, student office space and a conference center. On the third floor is a large community room with a TV and full kitchen. Each floor also has a small study area.



## AUSTIN HALL

Austin Hall houses more than 540 students who live in triple rooms with shared bathrooms. A number of single rooms are available as well. This nine-story building also includes rooms for students with special needs.



## SMILEY HALL

Smiley Hall, UT's smallest "traditional" residence hall, is built around a sunny courtyard and houses approximately 130 residents. Known for its close-knit community, this two-story building is located in the center of campus next to Plant Hall. Smiley Hall is home to our Living Well and First-Year Wellness Learning Communities. Most rooms are double occupancy and share a suite-style bathroom.



# On-Campus Residence Halls



## BREVARD HALL

Brevard Hall is home to approximately 470 residents in suite-style rooms with shared bathrooms. Some suites feature private bedrooms, and most have a living room. Brevard Hall offers ample study space and social spaces on the first floor. The L-shaped building creates an attractive courtyard for relaxing outdoors.



## THE BOATHOUSE

The Boathouse is home to 17 residents. Located on the banks of the Hillsborough River, it is convenient to the library and Plant Hall. Residents enjoy the small community, and a large deck overlooking the river and downtown Tampa skyline.



## MCKAY HALL

McKay Hall houses approximately 160 students mostly in double rooms with shared, suite-style bathrooms. Located on the bank of the scenic Hillsborough River, it is near Plant Hall and the library. Residents also enjoy easy access to picnic tables and a sand volleyball court.



# On-Campus Residence Halls



## STRAZ HALL

The apartment-style Straz Hall is eight stories high and houses approximately 490 residents. Each apartment features a full kitchen, living room, shared bathroom and four single bedrooms. The first floor offers plenty of community space where residents can study and socialize, either inside or outside.



## URSO HALL

Located conveniently across the street from the main entrance to campus, the 11-story Urso Hall houses approximately 180 upperclassmen. Students live in single and double studio apartments with mini kitchens and private bathrooms. Just outside the lobby is a large community garden room available for studying or hosting events.



## MORSANI HALL

Morsani Hall houses approximately 460 students. Residents live in double and triple rooms and have access to the many dining venue located on the first floor. Most suites have a small living room and two double bedrooms that share a bathroom. Residents also have use of a large community room on the second floor with a TV and kitchen.



# On-Campus Residence Halls



## JENKINS HALL

Jenkins Hall rises 11 stories and includes more than 520 beds. Most of the rooms are suite-style, with a common living room, four single bedrooms and two full bathrooms. The hall also has several lounges and a common kitchen. The 11th floor features two large community rooms with sweeping views of Tampa Bay.



## PALM APARTMENTS

Palm Apartments is a modern apartment-style residence hall. Apartments feature single bedrooms with a common living room, kitchen and bathroom.



# Living in Tampa Bay



## Off-Campus Housing

For new incoming international students with no acquaintances in the States, it can be challenging to find an apartment to share. Living, socializing, studying, and dining in close relationships with a "stranger" requires the development of respect for others, interdependence, and social skills. Many students prefer off-campus housing, which comes with more independence, a sense of adulthood, and lastly - a cheaper price (sometimes). Parallely, there is a trade-off as one has to commute to the campus for classes and events which bears additional cost and time. Here is a list of options and ways to look for off-campus housing. Hope this would help you make an informed decision between off-campus and on-campus housing options.

### THE HENRY



The Henry offers modern apartments, resort-style community amenities, and a vibrant student community. Make your college experience as comfortable as possible by joining the community.

### SOUTH WILLOW



Located within steps of campus, South Willow Flats provides students with University of Tampa off-campus housing unlike any other. It is a brand new, boutique-style complex featuring a rooftop lounge, fully-furnished luxe interiors, all-included utilities, and 4/4 layouts with en-suite bathrooms.

### VINTAGE LOFTS



Vintage Lofts offers upscale apartment living near the best of Tampa. A vast array of wonderful on-site amenities like a multi-level parking garage, game room, and resort-style pool. Stainless steel appliances, ample closet space, and in-home washer and dryer all come standard in your apartment at Vintage Lofts.



# Off-Campus Housing

## NOHO FLATS



NoHo Flats is an urban, chic apartment community in Tampa, Florida. Located in North Hyde Park, NoHo Flats enables residents to experience Lifestyle Tampa living as it should be.

## WEST RIVER FLATS



West River Flats is perfectly located so that you can enjoy peaceful living while still reaping all the benefits of living in the city.

## MAA HYDE PARK



Live the good life in one of Tampa's most desirable areas. Select apartments at MAA Hyde Park feature stainless steel appliances, granite countertops, fireplaces and spacious screened in porches.

## MAA SOHO



The MAA luxury apartments for rent in Soho, FL put you just a few blocks from the historic Hyde Park neighborhood with its tree-lined streets and wide variety of shops, from beloved local brands to top tier retailers.

Apart from commercial apartments other ways to find housing are different Facebook groups where people post about available spaces. These groups are fairly active and one can find short term living spaces as well.



**TAMPA ROOMMATES**



**UNIVERSITY OF TAMPA - OFF-CAMPUS ROOMMATES**



**TAMPA - HOUSING, APARTMENTS, ROOMS, SUBLETS**



# CELL PHONES

One of the requirements to be registered SEVIS is to have a US phone number and a US address. This will prove to the Department of Homeland Security that you are settled, attending school, and progressing on the purpose of your J-1 student visa.

The IPO has found an easy, economic, and great-quality option for new incoming exchange students. Each student will receive a free SIM card from Mint Mobile as part of their Welcome Packet during Orientation, or as soon as they arrive in the country if they stop by our office in Plant Hall Room 300 and ask for it.

This SIM card will need to be activated online. You will need to download the app for iPhone or Android on your unlocked phone or go to [campussims.com/start](http://campussims.com/start), and immediately you will have a US phone number with a basic plan free for the first month. If you come with dependents, please inform your International Student Advisor so they can give you free SIM cards for them as well. You will find all information related to plans, prices, advantages, and compatible phones at [mintmobile.com](http://mintmobile.com).

Just a heads up, sometimes the cellphones you bring from your home country are not compatible with the US mobile services. Check it first.

If you decide changing carrier, when selecting a cell phone provider, ask if there is a special plan for students, as well as what is required to set up a service plan. You should also think about how much bandwidth you'll need, international calling options, text messaging plans, and how many people will be on the account. Some providers require a Social Security Number (SSN) and may conduct a background check.

**T-MOBILE**



**LYCA  
MOBILE**



**VERIZON**



**AT&T**



**MINT  
MOBILE**



# BANKING

There are three types of banking services available: Full Service Banks, Savings and Loan Associations, and Credit Unions. Their services are similar in that they offer savings and checking accounts and loans to qualified customers. The interest rates for these may be more competitive at Credit Unions and Savings and Loans, but they vary only slightly. Banks offer additional services, such as the safety deposit boxes and international currency exchanges.

Here's a list of banks near the campus where one can open up a bank account without SSN.

- **Chase Bank**  
614 S Howard Ave, Tampa, FL 33606
- **Bank of America**  
249 S Hyde Park Ave, Tampa, FL 33606
- **Wells Fargo**  
214 S Hyde Park Ave, Tampa, FL 33606

## Documents to bring

When opening a bank account, one will generally need:

- Contact information
- Current residential address
- Passport
- I-94
- DS-2019
- Any funds one wants to deposit, but banks may have additional requirements so it's best to call and ask ahead of time.

# WHERE TO GET YOUR GROCERIES

These are the nearest supermarkets with a wide selection of groceries, plus deli & bakery departments you can find around University of Tampa.

## Publix

243 Bayshore Blvd, Tampa, FL 33606

2401 W Azeele St, Tampa, FL 33609

## Walmart

1601 W Kennedy Blvd, Tampa, FL 33606

## Walmart Supercenter

1505 N Dale Mabry Hwy, Tampa, FL 33607

## Winn-Dixie

2100 W Swann Ave, Tampa, FL 33606

Here are some international grocery stores you can explore:

## Patel Brothers

1251 E Fowler Ave F, Tampa, FL 33612

## Taaza Mart

6260 Commerce Palms Dr, Tampa, FL 33647

## Sultan Market

3613 E Busch Blvd, Tampa, FL 33612

# TRANSPORTATION

A number of options exist for students to commute in the area. UT's downtown location is ideal for walking, bike riding, and the use of public transportation.

## Hillsborough Area Regional Transit Authority (HART)

The Hillsborough Area Regional Transit Authority (HART) offers local bus service within Hillsborough County, the TECO Line Streetcar System in downtown, the Channel District and Ybor City, and alternative transportation options in the Tampa Bay area. The Downtown Tampa map provides a detailed map of service locations and points of interest in the downtown area.

Sponsored by Student Government, there are HART bus passes for sale in the Office of Student Leadership and Engagement (OSLE) for a discounted price. The passes are a 31-day "unlimited ride" sold exclusively to students. Stop by OSLE, Vaughn Center 215 to purchase yours today!

### HART DOWNTOWN TAMPA MAP

**LEGEND**

<b>HART SERVICE</b> <ul style="list-style-type: none"><li><b>HART Local Routes</b> Route &amp; Stops</li><li><b>HART Limited Express Routes</b> Route &amp; Stops</li><li><b>HART Marion Transit Center</b> Serving Routes: 1, 5, 6, 7, 8, 9, 10, 12, 19, 30, 27SLX, 300LX, 400, 100X/300X (PSTA)</li></ul> <p>All HART buses are wheelchair accessible and are equipped with bicycle racks.</p>	<b>POINTS OF INTEREST</b> <ul style="list-style-type: none"><li>Visitor Information Center</li><li>Amalie Arena</li><li>Armature Works</li><li>Boys &amp; Girls Club</li><li>Bro Bowl Skate Park</li><li>Centennial Park</li><li>Centro Ybor</li><li>Cotanchobee Fort Brooke Park</li><li>Cruise Terminal 2, 3 and 6</li><li>Curtis Hixon Waterfront Park</li><li>Florida Aquarium</li><li>HCC Ybor City Campus</li><li>Joe Chillum Courthouse Square</li><li>Julian B. Lane Riverfront Park</li><li>Lykes Goolight Park</li><li>MacDill Park</li><li>Perry Harvey Sr. Park</li><li>Plant Park</li><li>Robert W. Saunders, Sr. Public Library</li><li>Sparkman Wharf</li><li>Tampa Convention Center</li><li>Tampa General Hospital</li><li>University of Tampa</li><li>USF CANALS</li><li>USF Health</li><li>Water Works Park</li></ul>	
<b>TECO LINE STREETCAR</b> Route & Stations <b>FREE</b> Service every 15 minutes MON-THU 7 AM - 11 PM FRI 7 AM - 2 AM SAT 8:30 AM - 2 AM SUN 8:30 AM - 11 PM	<b>ALTERNATIVE TRANSPORTATION</b> <ul style="list-style-type: none"><li><b>Pirate Water Taxi</b> Stops River Route Island Connector</li><li><b>Cross Bay Ferry</b> Seasonal Service St. Pete - Tampa</li><li><b>Union Station/Amtrak</b></li><li><b>Greyhound Bus Station</b></li><li><b>Parking</b></li><li><b>Tampa Riverwalk</b></li></ul>	<b>ARTS AND CULTURE</b> <ul style="list-style-type: none"><li>American Victory Ship and Museum</li><li>Florida Museum of Photographic Arts</li><li>Glazer Children's Museum</li><li>Henry B. Plant Museum</li><li>John F. Germany Public Library</li><li>Straz Center for the Performing Arts</li><li>Tampa Bay History Center</li><li>Tampa Firefighters Museum</li><li>Tampa Museum of Art</li><li>Tampa Police Museum</li><li>Tampa Theatre</li><li>Ybor City Museum</li></ul>
<b>MARION TRANSIT CENTER</b> Arrival and Departure Locations	<b>GOVERNMENT</b> <ul style="list-style-type: none"><li>County Center</li><li>Courthouse Annex</li><li>Edgecomb Courthouse</li><li>Gibbons U.S. District Courthouse</li></ul>	<b>HART</b> For maps & schedules, visit <a href="http://GoHART.org">GoHART.org</a> Customer Service 813.254.4278

Plan your trip and track your ride with Google Maps & OneBusAway

Flamingo The New Way to Pay Your Fare with HART

# TRANSPORTATION

## Coast Bike Share

Coast Bike Share is an effective, convenient and environmentally friendly transportation option, enabling short trips around town. Coast Bike Share hubs can be found near campus and around the downtown, Ybor City, Channelside and Hyde Park areas. Coast bikes are available 24/7 and are equipped with baskets, lights and locks.

## Electric Scooters

The City of Tampa hosts a shared micro mobility program to provide bicycles and e-scooters for Tampa's downtown and surrounding neighborhoods. The bicycles and motorized scooters allow people to quickly and easily travel short distances and help commuters access public transit stops that are several miles away. For more information, please visit the City of Tampa's shared micro mobility program webpage.

The UT campus is considered a "no ride zone" for electric, rentable scooters. While UT applauds and encourages use of alternative transportation, because of UT's heavy pedestrian traffic, construction zones, narrow streets, accessibility requirements and frequent events, scooters can become hazardous and create safety issues for community members. UT community members who choose to use the rented electric scooters are asked to leave them at the vendor's off-campus scooter corrals, or at a safe, unobtrusive site on the perimeter of campus. Electric-powered scooters may not be charged in or near University buildings, including, but not limited to offices, residence halls and dining facilities.



# TRANSPORTATION

## Ride Share

Uber and Lyft ridesharing services are available throughout the Tampa Bay Area. Students can request affordable rides on demand using the Uber and Lyft apps. Rides are cashless and convenient.

Some tips to keep in mind while ridesharing:

- Request your ride inside. Limit the amount of time you're standing outside alone with your phone in your hand. Wait for your driver inside until the app tells you the driver has arrived.
- Get in the correct vehicle. Make sure the license plate, driver photo and driver name match what's listed in the app.
- Share your trip details with friends. While in the car and on the app, tap "Share status" for Uber or "Send ETA" for Lyft to share your driver's name, photo, license plate and location with a friend or family member. They can track your trip and see your ETA without downloading the app.
- Protect your personal information. There's no need to share your phone number or other contact information with your driver.

## Safety Tips

- Wear a seatbelt and be alert and aware during transit.
- Do not travel alone if possible and be extra careful late at night.
- Sit in the backseat. This ensures you can safely exit on either side of the car.
- Follow your intuition. Trust your instincts and use good judgment when riding with taxi or rideshare services. If you ever feel like you're in an emergency situation, call 911.
- UT students, faculty and staff who have the Spartan SOS safety application on their mobile devices can use the Friend Watch feature to set a timer when they travel that will inform a friend or family member if they do not arrive at their destination safely.

# TRANSPORTATION

## Zip Car

UT has partnered with Zipcar to offer a car-sharing program on campus. The convenient, economical transportation option is available 24 hours a day, seven days a week for students, faculty and staff ages 18 years and older. Members access cars using either their mobile device or their Zipcard and only pay for the time they rent the car – by the hour or by the day. The rate includes gas, insurance, GPS navigation, Bluetooth technology, 24-hour Roadside Assistance and in-car communication with the Member Care Center.

For more information, please visit UT's Zipcar webpage. Questions may be directed to Madi Bridges in the Office of Student Leadership and Engagement (OSLE), at [mbridges@ut.edu](mailto:mbridges@ut.edu) or (813) 257-3999.

## Tampa Amtrak Station

The Tampa Amtrak Station (Tampa Union Station) is at 601 N Nebraska Avenue in between downtown Tampa and Ybor City. Built in 1912, the train station is a historic landmark and trains on the Silver Star Amtrak route stop here. There is direct service to cities including Miami, West Palm Beach, Orlando, Jacksonville, Savannah, Charleston, Washington D.C., Philadelphia and New York City.

WalkScore identifies the area around the station as highly walkable; a greenway trail, cruise ship ports, tourist attractions and restaurants are in walking distance, although at first look, the station seems a bit isolated. Learn more about the amenities in and around the station below.

### Station Amenities:

- Free daily and overnight parking
- Checked bag service
- Bag storage (fee)
- Restrooms

### Things to Know:

- Tampa trains currently arrive and depart on Saturdays, Sundays and Mondays
- Trip time between Tampa and Orlando is about two hours
- Trip time between Tampa and Miami is about 5.5 hours



# TRANSPORTATION

## Tampa International Airport

Tampa International Airport is ranked #1 airport in 2022 North American Airport Satisfaction Study. It is one of the largest and most beautiful airports in the United States. It is said that Tampa International Airport (TPA) is easy to navigate and has good restaurants. Tampa International airport (TPA) is the closest airport from the University of Tampa which is approximately 6 miles from the campus. There are different transportation options from Tampa International Airport.

**TAMPA  
INTERNATIONAL  
AIRPORT**



**TAMPA  
INTERNATIONAL  
AIRPORT - GROUND  
TRANSPORTATION**



# RECREATION AND ENTERTAINMENT

## Movie Theaters

**CINEBISTRO  
HYDE PARK  
VILLAGE**



**AMC  
WESTSHORE**



## Shopping

### Hyde Park Village

1602 W Swann Ave, Tampa, FL 33606

Stylish open-air complex with higher-end retailers, restaurants & bars, plus a movie theater.

### Tampa Premium Outlets

2300 Grand Cypress Dr, Lutz, FL 33559

Tampa Premium Outlets is conveniently located off Interstate 75 and State Road 56 on Grand Cypress Drive. Anchored by Saks Fifth Avenue OFF 5TH, guests will enjoy over 110 shops including Marc Jacobs, Coach, J. Crew, Michael Kors, and Polo Ralph Lauren.

Located in the heart of Wesley Chapel, filled with beautiful landscapes, wildlife, and shopping. You will also enjoy delicious options at Market Hall, including Villa Fresh Italian Kitchen and Johnny Rockets.

### International Plaza and Bay Street

2223 N Westshore Blvd, Tampa, FL 33607

International Plaza and Bay Street is the dominant shopping mall and dining destination on the west coast of Florida, located adjacent to the Tampa International Airport. International Plaza is a traditional enclosed shopping mall anchored by Dillard's, Neiman Marcus, Nordstrom, and LifeTime Athletic.

### Westshore Plaza

250 Westshore Plaza, Tampa, FL 33609

Westshore Plaza is one of two enclosed shopping malls located in the Westshore business district of Tampa, Florida, developed by Albert L. Manley of Boston, MA. WestShore Plaza was opened in 1967 and was touted as Tampa's first shopping center that was fully air-conditioned.

# RECREATION AND ENTERTAINMENT

## Restaurants

All locals and tourists gather to its variety of longtime favorites and appealing new possibilities. From dive bars to fine dining, from vegan and vegetarian alternatives to wings and burgers, and from beach/waterfront eateries to food trucks. Here's a list of best dining options to visit in Tampa according to Tampa Magazines.

**OXFORD  
EXCHANGE**



**CHIPOTLE**



**GOODY  
GOODY  
BURGERS**



**TACO BELL**



**CHINA WOK**



**FORBICI**



**SPICE  
KITCHEN**



**DATZ**



**BOLAY**



**BARTACO**



**TAMPA BAY  
MAGAZINE**



# RECREATION AND ENTERTAINMENT

## Sports

### TAMPA BAY "CITY OF CHAMPIONS"

The Tampa Bay Lightning is a professional ice hockey team based in Tampa, Florida. It is a member of the Atlantic Division of the Eastern Conference of the National Hockey League (NHL). Tampa Bay has one Stanley Cup championship in their history, in 2003 – 2004. The team is often referred to as the Bolts, and the nickname is used on the current third jersey. The Lightning plays home games in the Amalie Arena in Tampa.

To know more about the Bolts you can visit to their website.



**BOLTS**



Tampa Bay Rays, American professional baseball team based in St. Petersburg, Florida, that plays in the American League (AL). The Rays began play in 1998 and were known as the Devil Rays until the end of the 2007 season. The Rays had the best record in the AL in 2020 and then won their second pennant with a seven-game ALCS victory over the Houston Astros. To know more about the Rays you can visit to their website.



Tampa Bay Buccaneers, American professional gridiron football team based in Tampa, Florida, that plays in the National Football Conference (NFC) of the National Football League (NFL). The Buccaneers won Super Bowl titles in 2003 and 2021. The Buccaneers (often shortened to "Bucs") were established in 1976, and they posted an ignoble 0–14 record in their initial season in the NFL. To know more about the Bucs you can visit to their website.



# Life at University of Tampa



During a student's exchange program the first point of contact should remain your international student advisor who can assist you with all matters pertaining to academics, well-being and immigration status. If the advisor cannot assist, you will be referred to the correct department.

## International Exchange Student Advisor

### Autumn Brucato

**Assistant Director, Education Abroad**

**Tel: (813)257-3501**

**Building: Plant Hall 300**

**Email: [abrucato@ut.edu](mailto:abrucato@ut.edu)**

J-1 Exchange students have a dedicated academic advisor to assist with course registration.

## Graduate Academic Advisor

### Fernando Nolasco

**Coordinator, Graduate Business Programs**

**Tel: (813) 257-3158**

**Building: JS, Room 204**

**Email: [fnolasco@ut.edu](mailto:fnolasco@ut.edu)**

## Undergraduate Academic Advisor

### **Darryl Johnson**

**Academic Advisor, Graduate and Continuing Studies**

**Phone: (813) 257-3514**

**Building: GHS, Room 605**

**Email: [ddjohnson@ut.edu](mailto:ddjohnson@ut.edu)**

## ACADEMIC SUCCESS CENTER

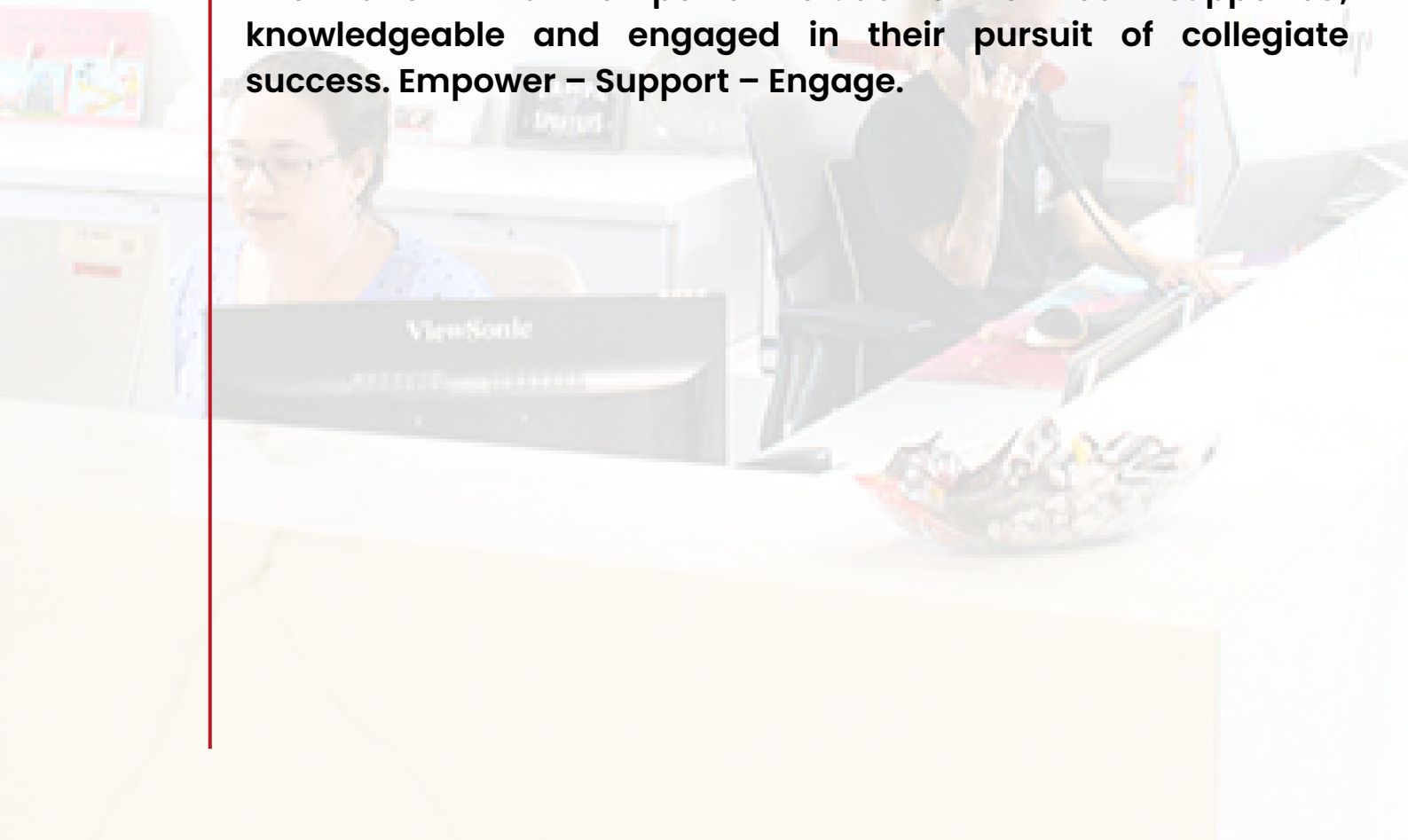
The Academic Success Center at The University of Tampa provides students with the tools they need to succeed academically. The Center houses the following academic programs:

### Academic Excellence Programs:

- Academic Skills Courses
- Coaching Student Success
- Student Accessibility Services
- Students Overcoming Academic Roadblocks (SOAR)
- Testing Services
- Tutoring

The Academic Success Center is on the second floor of the Technology Building (TECH). You can reach us at (813) 257-5757 during business hours (Monday through Friday from 8:30 a.m to 5 p.m.)

The Academic Success Center provides programs, services and information that empower students to feel supported, knowledgeable and engaged in their pursuit of collegiate success. Empower – Support – Engage.



# The Center for Public Speaking

The Center for Public Speaking's mission is to enhance communication skills and offer support services at The University of Tampa. We provide one-to-one tutoring and small group workshops with peer tutors and experienced professionals.

Speaking Center services include:

- Brainstorming and Outlining
- Mock Interviews
- Delivery and Content
- Evaluation of Visual Aids
- Conference Preparation

We are ready to work with you online or in-person! To schedule an appointment in person or online, visit our Instagram, [@UTampaSpeech](#).

Monday to Thursday: 10 a.m. to 6 p.m.

Friday: 10 a.m. to 2 p.m.

Location: Ferman Center for the Arts (FCA) building, Room 228 (#46 on the [campus map](#))

What to bring to a session at the speaking center:

- The assignment description (grading rubric)
- Specific instructions from your professor
- Questions to ask the peer tutor or problems you want to discuss

Speech Contest:

The UT Center for Public Speaking hosts a speech contest every fall semester. The contest is open to all students. Cash prizes are awarded. Registration or event questions? Email [lbrown@ut.edu](mailto:lbrown@ut.edu).



Lacey Corey Brown, Ph.D.

Director, Center for Public Speaking

Assistant Teaching Professor,

Communication and Speech

Tel: (813) 257-3551

Mailbox: 128F

Building: FCA Room: 234

Email: [lbrown@ut.edu](mailto:lbrown@ut.edu)

## **The Saunders Writing Center**

The Saunders Writing Center offers students one-on-one consultations to strengthen their fundamental writing skills to produce clear and creative writing. Tutors assist with brainstorming, proofreading, or revising writing for any classes at UT. Tutoring sessions are available in person.

**Monday: 9 – 11 a.m. and 12 – 6 p.m.**

**Tuesday: 10 a.m. – 6 p.m.**

**Wednesday: 9 – 11 a.m. and 11:30 a.m. – 6 p.m.**

**Thursday: 10 a.m. – 6 p.m.**

**Friday: 12 – 2:30 p.m.**

**Location and Appointments:**

**Plant Hall 323**

**(813) 253-6244**

**They can help with brainstorming, proofreading or revising writing for your classes at UT!**



## Macdonald-Kelce Library

The University of Tampa's library opened Oct. 19, 1969, and was originally named in honor of the late St. Louis industrialist, Merl Kelce, whose donation made the construction possible. It was re-named the Macdonald-Kelce Library in 1999 because of the generosity of the Macdonald Family Foundation whose contribution will transform the facility into a state-of-the-art information resource center. The Macdonald-Kelce Library is part of the Tampa Bay Library Consortium.

- Macdonald-Kelce Online
- The library's home page. Find information on collections, services, and policies.
- University of Tampa Institutional Repository
- Digital repository that collects, preserves, and distributes the intellectual output of the UT community.

The Macdonald-Kelce Library provides access to:

- More than 275,000 books and 65,181 periodicals
- Reference materials
- Government documents
- DVDs, laptops, CDs, streaming video, and records
- Media services equipment and support
- Special collections, including:
  - Florida military materials
  - Old and rare books
  - Local history and UT archives
- Reference assistance and bibliographic instruction
- Interlibrary loans and reserve materials
- Computer lab and study rooms



## Office of Career Services

### EXPLORE.EXPERIENCE.ACHIEVE.

The Office of Career Services serves as a bridge between students' college experience and life after UT. Starting the first year at UT and continuing beyond graduation, we are here to help students explore who they are and their career options, connect their experience – whether it is academic, campus involvement and engagement, internships or work experience, to careers or graduate school – and achieve their post-graduation goals.

The Career Services staff wants you to know that we are here for you during this unique and challenging time. The Office of Career Services is happy to help, whether you are looking to EXPLORE careers, searching for your next EXPERIENCE or seeking to ACHIEVE an internship or job.

#### Resources at Distance

Phone: (813) 253-6236

Email: [hireut@ut.edu](mailto:hireut@ut.edu)

Fax: (813) 258-7271

Location: Southard Family Building 117

Mailbox: Box K



## Informational Technology and Security

The Information Technology and Security organization encompasses the Information Technology Operations, Information Security and Enterprise Solutions departments. We are dedicated to delivering excellent customer service while partnering with campus organizations to enhance and optimize their use of technology resources to meet business and academic objectives.

- The Information Technology and Security service desk provides support to students, faculty and staff with assistance tailored to each group's specific needs.
- The Information Security team provides a multi-faceted security awareness and data protection program to help provide the UT community with training and resources to promote safe computing.
- Campus Media Services handles audio visual support for events and provides faculty with assistance utilizing audio visual equipment in labs and classrooms.



---

## Tuition and Fees

- J-1 Exchange students pay tuition to their home institution therefore all UT tuition fees are waived.
- Exchange students are only responsible for paying the following fees per semester:
  - the student service fee: \$50
  - the International Health Insurance: \$470

---

## E-Mail Account

- All University of Tampa students are assigned an email account ending with @spartans.ut.edu. All official emails from The University of Tampa are sent to this address only, and it is important to check it regularly.

---

## Student ID

The University issues a photo identification card, also known as the Spartan Card, to all registered students, faculty and staff. The card is your primary proof of identification on campus and provides you access to your residence hall, parking garages, meal plan, post office, library services, select classrooms, fitness center and campus events.

### Spartan Card Office Hours of Operation

Our staff will remain available to assist you during normal business hours via phone and email.

Office email: [spartancard@ut.edu](mailto:spartancard@ut.edu)

Office phone: (813) 253-6296

### Regular Hours of Operation

Monday–Thursday, 9 a.m. to 4:45 p.m., and Friday, 9 a.m. to 4 p.m.

### Summer Hours

Monday–Thursday, 9 a.m. to noon and 1 to 4 p.m., closed on Friday

Office hours change to 9 a.m. to 4 p.m. during Orientation Week and return to the regular schedule at the start of the semester.

---

## Wireless Access

### Wireless Hardware and Configuration

The UT Wireless Network is configured with IEEE 802.11 a/g/n access points. Your wireless network adapter needs to be compatible with IEEE 802.11 a/g/n.

The SSID is UoT.

Use your Network (Spartans Domain) username and password to access the UT Wireless network. Visitors can [Request Visitor Network Access](#).

You will be required to read and accept The University of Tampa Acceptable Use Policy prior to accessing the UT Wireless Network.

### Wireless Security Tips

Wireless connectivity to the Internet is generally not secure. You should not enter personal information such as social security numbers or credit card information when connected to any wireless network.

The University provides wireless network access to complement the extensive wired Ethernet network. Despite the convenience of the UT Wireless Network, access may not consistently provide the same performance and reliability as the wired Ethernet Network.

---

---

## The UT Bookstore

The University of Tampa has its own bookstore where you can course materials and textbooks to apparels, supplies and gifts to also things related to technology.

Location: Vaughn Center 1st floor  
Phone: (813) 253-6230



---

## Benson Alex Riseman Fitness and Recreation Center

The Office of Campus Recreation offers hundreds of organized activities in intramural sports, fitness, club sports and informal recreation, both on and off campus. On average, students make up over 350 different organized intramural teams throughout the year, participating in nearly 1,000 games. UT has intramural sports for flag football, softball, basketball, soccer, ultimate Frisbee, volleyball and more. Off-campus activities have included paintball, hiking, water biking, stand-up paddleboarding, as well as sea and moonlight kayaking.

To learn more about our services, please navigate our web pages, read our policies or visit our office located on the first floor of the Fitness and Recreation Center, Room 107. Summer office hours are Monday–Friday, 8 a.m.–5:30 p.m. Visit Fitness and Recreation Center for hours of operation and closures.

You can also reach us by phone at (813) 258-7435.



---

## On-Campus Food services

At the University of Tampa, you have almost instant access to good food and a diversity of cuisine from which to choose. You can even stop by at Starbucks Reserve for a cup of coffee, gather your friends to go to the Ultimate Dining Center or maybe grab some fries and nuggets at Chick-fil-A.

---

## Ultimate Dining

Featuring a wide variety of fresh food designed to satisfy everyone's appetite with food choices to rival your favorite restaurants. Join us for breakfast, lunch, or dinner at our all-you-can-eat buffet, featuring 10 dining stations!

### Monday-Thursday

Breakfast: 7:00 AM - 10:30 AM

Lunch: 11:00 AM - 2:30 PM

Dinner: 4:30 PM - 9:00 PM

### Guests/Students:

Breakfast - \$11.13

Lunch/Brunch - \$12.87

Dinner - \$13.30

### Friday

Breakfast: 7:00 AM - 10:30 AM

Lunch: 11:00 AM - 2:30 PM

Dinner: 4:30 PM - 7:00 PM

### Faculty/Staff:

Breakfast - \$7.50

Lunch/Brunch - \$9.20

Dinner - \$9.20

### Saturday-Sunday

Brunch: 9:00 AM - 2:30 PM

Dinner: 4:30 PM - 7:00 PM



## Spartans Club

### The Grill

The Grill offers high-quality cheeseburgers, chicken tenders, grilled chicken sandwiches, French fries, and onion rings, as well as a variety of vegetarian options and healthier selections.

#### Regular Hours

Monday-Friday:

11:00AM - 11:00PM

Saturday-Sunday:

2:00PM - 11:00PM

### Chick-fil-A

A favorite stop for breakfast, lunch, or dinner, Chick-fil-A offers premium chicken strips, sandwiches, salads, wraps, waffle fries, and more.

#### Regular Hours

Monday-Friday:

11:00AM - 9:00PM

Saturday-Sunday:

Closed

### Einstein Bros. Bagels

In addition to its famous bagels, cream cheese schmears, and coffee, Einstein Bros. Bagels offers salads, sandwiches, and baked goods, making it a perfect stop any time of the day.

#### Regular Hours

Monday-Thursday:

7:00AM - 4:00PM

Friday:

7:00AM - 4:00PM

Saturday-Sunday:

9:00AM - 3:00PM

### Fresh Creations

If you are yearning for a freshly tossed specialty salad or a healthy wrap, then stop by Fresh Creations in the Spartan Club! Your taste buds will tingle as our salad specialists prepare your fresh salad or favorite wrap.

#### Regular Hours

Monday-Friday:

11:00AM - 11:00PM

Saturday-Sunday:

2:00PM - 11:00PM





---

## Morsani Hall

### Gourmet Grocer

Gourmet Grocer is a boutique style petite market offering fresh gourmet sandwiches, pastries, soups, salads, convenience items, and premium bottled beverages.

#### Regular Hours

Monday–Friday:

11:00AM – 11:00PM

Saturday–Sunday:

Closed

### Panche

Panache is an upscale restaurant that offers contemporary fusion-style cuisine, taking global exotic flavors and giving them an unforgettable twist.

#### Regular Hours

Monday–Friday:

11:00AM – 2:00PM

Saturday–Sunday:

Closed

### Star Ginger

Fresh flavors abound in new takes on classic Pan-Asian dishes, including Pho Noodle Bowls, Vegan-Friendly Banh Mi Sandwiches, Stir-Fry Rice Bowls, Curries, Pot Stickers, and more!

#### Regular Hours

Monday–Friday:

11:00AM – 7:00PM

Saturday–Sunday:

Closed

### Mindful

Mindful offers a variety of freshly made breakfast options, including scrambled egg bowls, avocado toast, coffee and bakery items!

#### Regular Hours

Monday–Friday:

8:00AM – 10:00PM

Saturday–Sunday:

11:00AM – 10:00PM

### AFC Sushi

Featuring delicious, beautifully prepared sushi favorites, such as California rolls, eel rolls, and combination platters. Vegetarian options include cream cheese sushi and vegetable rolls.

#### Regular Hours

Monday–Friday:

11:00AM – 11:00PM

Saturday–Sunday:

Closed

### Dairy Queen/Orange Julius

The Dairy Queen/Orange Julius Treat Center is the first-ever on a college campus, serving all of your Dairy Queen and Orange Julius favorite treats.

#### Regular Hours

Monday–Friday:

11:00AM – 11:00PM

Saturday–Sunday:

4:00PM – 11:00PM

## Morsani Hall

### Pandini's

Pandini's takes Old World Italian to a whole new level with individual gourmet and traditional pizzas, and signature parmesan subs, complimented by fresh salads and Italian classics such as build-your-own tossed pasta.

#### Regular Hours

Monday-Friday:

8:00AM - 10:00PM

Saturday-Sunday:

11:00AM - 10:00PM

### Salsa Rico

On the Baja coast of California, the Pacific breezes are balmy and life is just as easy as you've heard. Salsa Rico®, a Baja-style Mexican grill, salutes that fresh and honest way of life with fresh, clear flavors served in a relaxed atmosphere.

#### Regular Hours

Monday-Friday:

11:00AM - 11:00PM

Saturday-Sunday:

2:00PM - 11:00PM

### Panche

Panache is an upscale restaurant that offers contemporary fusion-style cuisine, taking global exotic flavors and giving them an unforgettable twist.

#### Regular Hours

Monday-Friday:

11:00AM - 2:00PM

Saturday-Sunday:

Closed

### AFC Sushi

Featuring delicious, beautifully prepared sushi favorites, such as California rolls, eel rolls, and combination platters. Vegetarian options include cream cheese sushi and vegetable rolls.

#### Regular Hours

Monday-Friday:

11:00AM - 11:00PM

Saturday-Sunday:

Closed



## Starbucks Reserve

Starbucks Reserve provides a comfortable and relaxed indoor and patio gathering space for UT Community members. This venue offers Starbucks Reserve, a special collection of rare, small-lot coffees that are selected from farms all over the world. Also available are a variety of pastries and confections, and coffee-related accessories and equipment. Starbucks Reserve also offers a line of premium Teavana Teas.

**Hours:**

**Monday-Friday**

**8:00 AM - 8:00 PM**

**Saturday-Sunday**

**9:00 AM - 5:00 PM**

## The Rathskeller

Looking for a quiet place to grab a bite to eat while studying? Forget the library and check out the Rathskeller, which is located in the basement of Plant Hall. The Rathskeller is a popular spot for dining and features a Boar's Head Deli and Starbucks We Proudly Serve.

**Hours:**

**10:00 AM - 3:00 PM**

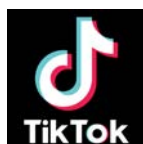
**Saturday-Sunday Closed.**



---

## Social Media

Place yourself in the life of a student firsthand by viewing one of UT's social media stories. Experience the excitement of visiting campus, moving in, daily life and graduating through real UT students' posts.



# EMERGENCY NUMBERS

If you have an emergency requiring police, fire or ambulance service response, call 911. Then, reach Campus Safety at (813) 257-7777.

## Important Phone Numbers

Department of Campus Safety: ext. 7777, off-campus, (813) 257-7777

Emergencies Only: 911

Tampa Fire Department: (813) 223-4211

Tampa General Hospital: (813) 251-7000

Tampa Police Department: (813) 231-6130

## Dickey Health and Wellness Center:

The Dickey Health and Wellness Center at The University of Tampa offers basic health care services, wellness services and health information for preventing illness and maintaining an energetic life.

Hours of Operation:

Appointment only. No walk-ins, please.

24-Hour Daily Service

Fall and Spring Semesters

Monday-Wednesday: 8:30 a.m. – 5 p.m.

Thursday: 9:30 a.m. – 5 p.m.

Friday: 8:30 a.m. – 5 p.m.

Summer Hours

Monday-Thursday: 8 a.m – 5 p.m.

Fridays: Closed

# CAMPUS SAFETY

The University of Tampa's Department of Campus Safety is dedicated to providing a safe and secure environment for the campus community.

Get direct access to Campus Safety in an on campus emergency or quickly connect to other services by downloading the new Spartan SOS app from the Apple App Store or Google Play. For more information on the Spartan SOS app.

The University of Tampa considers the safety of all University community members integral to its educational mission. Officers patrol campus 24 hours a day, every day of the year. They also assist with services such as publishing crime prevention information, providing pedestrian escorts, assisting with personal property engraving and vehicle registration. For more information, contact the Department of Campus Safety at (813) 257-7777 or x7777 if on campus or email [campussafety@ut.edu](mailto:campussafety@ut.edu).

# VICTIM ADVOCATE

College campuses are academic institutions that foster individual growth and intellectual development in safe and supportive environments. Statistics demonstrate that college students are safer than people of the same age in different environments. But, despite best efforts and practices, no campus is completely safe and college students do become crime victims. The University of Tampa is committed to supporting our students.

UT is proud to offer victim advocacy services to any student who has been the victim of a violent crime. The program is staffed with trained advocates who are designated by the Office of the Attorney General to provide victim services and work on-campus in student life. An advocate may be contacted during the fall and spring semesters through the victim advocate hotline (813) 257-3900 or by contacting [Campus Safety](#). During summer terms or between academic terms, advocates may be contacted solely through Campus Safety. You may always contact an advocate by emailing [victimadvocacy@ut.edu](mailto:victimadvocacy@ut.edu).

# Places that made Tampa my "new home"



**To catch beautiful sunrises**

**BALLAST POINT PIER**



**To see sunsets and have picnics**

**CLEARWATER BEACH**



**To go for a run or walk with a view**

**BAYSHORE BOULEVARD**



**Burgers, Milkshakes and Pies**

**GOODY GOODY BURGERS**



**A good start of the day!**

**BUDDY BREW COFFEE**



**Let's all scream, ICE CREAM**

**CHILL BROS**



# THE UNIVERSITY OF TAMPA CAMPUS MAP 2023-2024

Revised Aug

## Athletic and Recreational Facilities

1. Athletic Offices/Classrooms
2. Baseball Field
3. Beach Volleyball Complex
4. Benson Alex Riseman Aquatic Center (POOL)
5. Benson Alex Riseman Fitness and Recreation Center (FIT)
6. Cass Gymnasium
7. Martinez Athletics Center (MAC)
8. McNeel Boathouse
9. Naimoli and Young Family Tennis Complex
10. Naimoli Family Athletic and Intramural Complex
11. Naimoli Family Softball Complex
12. Pepin Stadium
13. Track

## Residence Halls

14. Austin Hall
15. Barrymore Hotel
16. Brevard Hall
17. Jenkins Hall
18. McKay Hall
19. McNeel Boathouse
20. Morsani Hall
21. Palm Apartments
22. Smiley Hall
23. Straz Hall
24. Urso Hall
25. Vaughn Center

## CAMPUS PARKING KEY

- Staff/Faculty Parking
- Residential Student Parking
- Commuter Student Parking
- Admissions/Visitor Parking
- Museum Parking
- Faculty/Staff/Commuter Parking



This symbol designates automated external defibrillator (AED) unit locations.



Disabled parking is available near all campus buildings.



The University of Tampa is a smoke-free campus. This applies to all faculty, staff, students and visitors.



Pedestrian Walkway



Electric Vehicle Charging Station



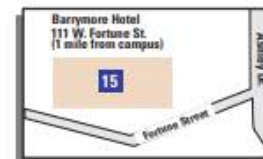
Construction Zone



Bicycle Rack



Zipcar Car Sharing Pick Up



## Academic and Administrative Facilities

26. Admissions – 1st Floor
27. Bailey Art Studios (BAS)
  - Fab Lab
28. Bookstore – Barnes & Noble
29. Campus Safety – 1st Floor
30. Cass Building
  - Communication (CCB)
  - Gymnasium (CB)
  - Science (CB)
31. Central Receiving
32. Chiller Plant
33. Chiselers' Conference Room – 2nd Floor
34. College of Arts and Letters – 3rd Floor
35. College of Natural and Health Sciences – 2nd Floor
36. College of Social Sciences, Mathematics and Education – 4th Floor
37. Communication Annex (Faculty Offices)
38. Daly Innovation and Collaboration Building (ICB)
39. Dickey Health and Wellness Center
40. Dining Facilities – Morsani Hall
41. Dining Facilities – Vaughn Center
42. Faculty/Staff Offices
43. Falk Theatre (FALK)
44. Ferman Center for the Arts (FCA)
  - Charlene A. Gordon Theater
  - Charlene and Mardy Gordon Performance Gallery
  - Saunders Foundation Art Gallery
45. Fletcher Lounge – Plant Hall
46. Gatehouse
47. Grand Salon – Plant Hall
48. Jenkins Health and Technology Building
  - 48a: Health Building – (GHS)
    - Graduate and Continuing Studies – 8th Floor
  - 48b: Technology Building – (TECH)
    - Academic Success Center – 2nd Floor
    - Information Technology and Security – 1st Floor
49. Health Sciences and Human Performance Building (HSHP)
50. Henry B. Plant Museum
51. Lowth Entrepreneurship Center – 8th Floor
52. Kennedy/Boulevard Building (KBB)
53. Krusen Building
54. Leadership Development Course
55. Little School House
56. Macdonald-Kelce Library (LIB)
57. MacKechnie Building (MKE)
58. Mail Services
59. Music Room – Plant Hall
60. Plant Hall (PH)
61. Rathskeller – Ground Floor
62. Reeves Theater – 2nd Floor (VAUG RVS)
63. Registrar's Office
64. Scarfone/Hartley Gallery
65. Schoomaker ROTC and Athletics Building (SCHO)
66. Science Research Laboratories
67. Science Wing – Plant Hall (SC)
68. Science Annex (SA)
69. Southard Family Building (SFB)
  - Alumni Relations
  - Career Services
  - Development and University Relations
  - Human Resources
70. Sword & Shield Room
71. Sykes Chapel and Center for Faith and Values (SCFV)
72. Sykes College of Business (JS)
73. Sykes Plaza and Susan and John Sykes Ars Sonora®
74. Thompson Building
75. Vaughn Center (VAUG)
  - Conference Facilities – 9th Floor
  - Crescent Club
  - President's Conference Room
  - Trustees Board Room

